

# Smoke Bluffs Park Management Plan

February 2017



# Table of Contents

<b>Introduction .....</b>	<b>3</b>
Smoke Bluffs Park .....	3
Smoke Bluffs Park Vision.....	3
Management Plan Purpose.....	3
Smoke Bluffs Park Advisory Committee .....	4
<b>Smoke Bluffs Park Map .....</b>	<b>5</b>
<b>Background .....</b>	<b>6</b>
History .....	6
Smoke Bluffs Park Advisory Committee Achievements.....	6
<b>Roles and Responsibilities .....</b>	<b>7</b>
Committee Role .....	7
Staff Roles .....	7
<b>Future Improvements.....</b>	<b>9</b>
<b>Operations and Maintenance .....</b>	<b>10</b>
Ongoing Operational Work.....	10
Vegetation Management .....	11
BC Hydro Rights of Way .....	12
<b>Climbing Routes .....</b>	<b>14</b>
<b>Events and Filming .....</b>	<b>15</b>
Filming Activities .....	15
Special Events .....	15
<b>Additional User Groups .....</b>	<b>16</b>
<b>Appendix.....</b>	<b>20</b>
Table 1: Capital Project Priorities.....	20
Table 2: Management Project Priorities .....	21
Table 3: Maintenance Work Priorities .....	22

# Introduction

## Smoke Bluffs Park

The Smoke Bluffs, or the Bluffs as referred to by the locals, have become a local landmark in Squamish and source of activity for climbers, hikers, visitors, and the wider Squamish community. Located to the northeast of downtown Squamish, the Bluffs range high above the Mamquam Blind Channel and stretch along the eastern edge of the Squamish River estuary. While the Bluffs in this area are dwarfed by the granite monoliths found in the nearby Stawamus Chief Provincial Park, they hold particularly high value for rock climbing. The warm, quick-drying south and west aspects of the Bluffs make it the ideal area for both sport (bolted) and traditional climbing routes. Furthermore, the quality granite crags have earned the Smoke Bluffs its popularity within the regional and international climbing community.

With its quality rock formation, landscape, and prime location, the Smoke Bluffs area has been popular with rock climbers since at least the 1970's and continues to increase in popularity. The primary intent of the Smoke Bluffs Park is to protect and enhance the rock climbing opportunities within the park. Demands on the park have increased in step with the regional population and the popularity of rock climbing. Over the years, the more accessible and heavily used parts of the park have become more manicured; however, visitors also value the wilderness character in more remote areas of the park. Moving forward it is recognized that a balance must be found between climbing route development and preservation of the park character.

## Smoke Bluffs Park Vision

As a semi-urban municipal park and rock climbing mecca, the Smoke Bluffs Park is unique in Southwest British Columbia. While the main focus is climbing, the park is also embraced by walkers, hikers and runners who value the ease of access, proximity to town, and natural setting. Park management employs a collaborative, community-minded approach which engages the surrounding neighbourhood.

## Management Plan Purpose

The purpose of this document is to guide the management of the Smoke Bluffs Park. The Management Plan:

- Builds on the [Development Plan for Smoke Bluffs Park \(2006\)](#);
- Outlines broad policies and specific protocols that reflect the vision, goals, and strategic approaches developed with the Smoke Bluffs Park Advisory Committee over the years;
- Defines roles and responsibilities for stakeholders in relation to management of the Smoke Bluffs Park;
- Establishes protocols for the ongoing operation and maintenance of the Smoke Bluffs Park; and
- Includes prioritized lists of future capital and management improvements to the Smoke Bluffs Park, and a maintenance work plan, as an appendix to be updated on an annual basis.

### **Smoke Bluffs Park Advisory Committee**

The Smoke Bluffs Park Advisory Committee, a Select Committee of Council, was established by District of Squamish Bylaw in January 2007; the first meeting of the Committee was held in March of that year. The purpose of the Advisory Committee is to act as steward of the Smoke Bluffs Park and to provide Council advice and recommendations with respect to Smoke Bluffs Park. The Advisory Committee is not responsible for ongoing operations of the Park, which are to be undertaken by the District, utilizing volunteers whenever possible.



# Background

## History

Climbers have been accessing the crags at Smoke Bluff Park since the 1970's. Early development of climbing routes was informal, done mainly by climbers who cleared vegetation from routes, placed anchors, and developed trails to access the climbs.

The original parking area was the open area at the north end of Smoke Bluff Road, now the location of a composting toilet and children's play park. Over time, private residential development occurred near the Bluffs and in 1985 it was first suggested that the area be established as a park. In 1987 the Federation of Mountain Clubs of BC purchased parcels of land west of DL1957 which encompasses the core of the Bluffs in order to prevent residential development and to protect climber access to the crags. The intent was to combine these acquired parcels with DL1957 as a formal park.

As the Bluffs grew in popularity, the parking lot at the north end was developed in the 1990's to relieve pressure on the residential streets south of the Bluffs and to provide a larger parking area for easier access. Efforts to formalize the park were renewed in 2004 which resulted in the establishment of the Smoke Bluffs Park by the District of Squamish.

Volunteerism has always been very important to the Smoke Bluffs Park. Climbing routes have been developed over the years by the climbing community. Numerous hours have been invested in clearing vegetation (removing moss and lichen from the rocks), adding belay anchors and intermediary bolts as determined by the first ascensionist, and trail building for route access. Materials and hardware used in climbing development are typically supplied by the first ascensionist. In addition to volunteers, the Park has also benefited from a Justice Department work incentive program coordinate with the PLEA Community Service Society of BC.

The Smoke Bluffs Park Advisory Committee has established a Crag Workgroup who encourages the development of new climbs and the clean-up or revitalizing of old climbs that have become overgrown and disused. Cleaning and developing routes enables users to access different areas of the Smoke Bluffs and consequently increases the capacity of the park to accommodate climbers.

## Smoke Bluffs Park Advisory Committee Achievements

Some past achievements of the Smoke Bluffs Park Advisory Committee include:

- Loop trail development;
- Additional connector trails and climbers' trails;
- Bike racks, picnic tables and outhouses;
- Composting toilet;
- Maps and signage; and
- Guidelines and procedures for monitoring film industry use in park.

# Roles and Responsibilities

## Committee Role

The Smoke Bluffs Park Advisory Committee is intended to operate as an advisory committee to District Council and staff by providing direction and feedback to the District of Squamish on park issues. This structure was defined by the District of Squamish Smoke Bluffs Park Advisory Committee Establishment Bylaw No. 1935.

The Committee meets periodically through the year, generally 3-4 times annually scheduled as needed for the committee to fulfill its role. Meetings in the first quarter of the year are used to provide recommendations to the District on upcoming annual maintenance and operation activities. Meetings in the third and fourth quarters are used to review maintenance and operations activities from the year, to provide recommendations to the District for more substantive actions and projects to be undertaken in the following year, and to provide input on allocation of the annual Smoke Bluffs Park budget for the following year.

On an annual basis the Committee reviews Capital Projects Priorities, Management Projects Priorities and the Maintenance Priorities appended to this document. These priorities guide the Committee in making annual recommendations to District staff.

In accordance with Bylaw No. 1935, the Committee provides a report to Council by the end of February each year describing activities undertaken in the past year and identifying project and maintenance priorities for the future.

The Smoke Bluffs Park Advisory Committee provides commentary on referrals from the District of Squamish relevant to the Park. These referrals can include proposed works to be undertaken in the park such as infrastructure projects and community communications related to items such as rock climbing, environment and parking issues.

## Staff Roles

### *Operations Department*

The Operations department manages ongoing operational tasks in the park including Capital Projects and Maintenance Work identified in this plan, preparation and management of the annual operating budget, attending committee meetings, communication with the committee and Council on park issues including works undertaken in the park, and liaising with BC Hydro on park issues. Operations will consult with the Committee regarding the planning and undertaking of works in the Park such as infrastructure projects.

### ***Planning Department***

The Planning department maintains and updates the Smoke Bluffs Park Management Plan, and coordinates Capital and Management Project priorities identified in this plan as directed by Council. Planning will consult with the Committee regarding proposed community communications related to the Park on items such as rock climbing, environmental or parking issues.

### ***Environmental Coordinator***

The Environmental Coordinator reviews tree and vegetation removal related to the park, including on BC Hydro power line rights of way.

### ***Film and Event Manager***

The Film and Event Manager coordinates filming, and recreational events in the park.



## **Future Improvements**

Historical development of the Smoke Bluffs Park was achieved through informal efforts of the climbing community. The intention of this Management Plan is to ensure that future improvements within the park continue to be guided by the community through the Smoke Bluffs Park Advisory Committee. Capital Project Priorities and Management Project Priorities are included as Tables 1 and 2 in the Appendix of this plan. Project Priorities are intended to be reviewed and updated by the Smoke Bluffs Park Advisory Committee annually to identify future priority needs.

### **Trail Development**

Any new trail development within the park should be authorized by the Smoke Bluffs Park Advisory Committee and the District of Squamish prior to any route clearing or trail construction. Unauthorized trail building and structure construction is not permitted within the park boundaries.

# Operations and Maintenance

## Ongoing Operational Work

The Smoke Bluffs Park will be operated on a day-to-day-basis by the District of Squamish Operations Department. Routine maintenance and operations will be undertaken and managed where possible by the District using existing volunteers, groups and contractors previously engaged in work within the Smoke Bluffs Park. This will build on the existing knowledge and expertise of these individuals and groups and should obtain the best value for the District. The District will enter into simple contracts with the individuals or groups as necessary to manage ongoing operational work. These contracts will outline the requirements to comply with relevant bylaws of the District, follow safe work practices as required, and minimize the need for day-to-day supervision of work by District staff. Any hazardous work conducted in the park by contractors will require prior approval from the District of Squamish.

Maintenance Work Priorities (Included in the Appendix of this plan) will be developed by the Smoke Bluffs Park Advisory Committee annually to identify priority maintenance projects for the subsequent year and short term (1-3 years).

Operations and maintenance funding will be included in the District's Annual Financial Plan. District Operations staff will be accountable for the use of those funds and the operation of the Park. Routine maintenance, repair, or installation of any capital assets in the park will be undertaken as part of the annual budget.

Key operational tasks in the Smoke Bluffs Park include:

- Trail maintenance, trail repair and other improvements;
- Vegetation management, brush back and removal;
- Storm water management, erosion management and culvert maintenance;
- Sign maintenance and replacement;
- Maintenance of structures such as stairs, picnic tables, benches and outhouses;
- Waste management and collection; and
- Washroom maintenance.

Operations and maintenance funding for the Smoke Bluffs Park may also be used to support climbing infrastructure within the park. District staff will not be responsible for any work related to climbing routes or climbing infrastructure in the Park.

Key operational tasks in the Smoke Bluffs Park related to climbing routes include:

- Climbing anchors replacement is managed by the Smoke Bluffs Park Advisory Committee Crag Workgroup and the Squamish Access Society; and
- Climbing route upkeep and vegetation maintenance by the Smoke Bluffs Park Advisory Committee Crag Workgroup.

Life cycle replacement or the addition of new assets in accordance with the Capital Projects Priorities identified in Table 1 will be undertaken as approved by Council in the District's annual capital budget.

Where maintenance, construction or replacement of capital assets are beyond the capacity of the volunteer individuals, groups, and contractors, or where specialized work is necessary, the District will follow its' Purchasing Policy. An approved suppliers list may be developed through a Request for Proposal for these projects.

## **Vegetation Management**

The Smoke Bluffs Park is a climbing-specific, backcountry-style park with limited vehicle access, which poses unique challenges with respect to encroaching vegetation. Vegetation management will be a focus in the following areas: crags, trails, and BC Hydro's transmission line rights of way. Vegetation within other areas of the park (i.e. off-trail) will not be maintained, unless required to fulfill some other objective such as fuel hazard reduction, insect outbreak management or blowdown cleanup. The park will be maintained so that the natural forest character will be retained while still enabling the park vision to be achieved.

### *Crags*

Vegetation management on and around both new and established climbing areas is an essential part of managing the primary park resource of rock climbing. Without upkeep, crags would fall into disuse which would increase pressure on other crags and lower the overall climber experience. In addition to maintaining established crags, development of new climbing areas is encouraged in order to reduce pressure on existing crags in the park. For these reasons, vegetation management at crags will be regular and frequent, and will be guided by the following principles:

- Prevent established climbs from becoming overgrown and unclimbable, or less desirable;
- Enable sufficient sunlight and airflow to reach cliff faces to speed drying and slow vegetation re-growth;
- Ensure open access at the base of climbs to prevent ropes / gear from becoming entangled in vegetation;
- Create and/or maintain safe and visible access trails to reach climbing areas; and
- Encourage the development of new climbing areas.

BC Parks has developed the "Best Practices Guide for Rock Climbing Route Development in the Squamish Area Provincial Parks." This guide has been endorsed by the climbing community and the District of Squamish Council, and is to be used for all aspects of route development, including vegetation management within the Smoke Bluffs Park.

### *Trails*

The extensive network of trails within the Park will also require regular vegetation management. Both

the level and frequency of vegetation management will be guided by a given trail's expected level of use. In general, activities will be guided by the following principles:

- Maintain sufficient trail width to safely accommodate the expected traffic;
- Remove hazardous limbs, trees, logs, or vegetation when needed; and
- Avoid disturbing sensitive features when establishing new trails (ponds, bogs, creeks, etc.).

### *Debris*

Clearing vegetation away from crags and trails can produce large amounts of debris. Shrubs, tree limbs, and logs are the most significant component, and the level of management required depends on the amount of material generated and the accessibility of the site. In general, debris management guided by the following principles:

- Do not create large accumulations of debris (piles, windrows, mats, etc.);
- Scatter debris into small piles, away from trails and areas frequented by the public;
- Ensure debris is in sufficiently small pieces to lie as flat as possible on the ground;
- Consider placing larger pieces along trail or crag edges to define the area;
- Ensure debris and logs cannot roll downhill by anchoring it behind trees / stumps; and
- If major brush or tree clearing will occur where vehicle access is available, or in very high traffic areas, consider chipping and hauling debris away from the Park.

## **BC Hydro Rights of Way**

Four BC Hydro high voltage transmission lines run through the park, having BC Hydro designations 2L13, 2L09, 60L68, and 60L70. The 2L13 runs across the main parking lot and overtop of the Smoke Bluffs Trail and onwards to Penny Lane crag then exits the park. The 2L09 runs roughly parallel to the 2L13 overtop of the Smoke Bluffs Trail before diverging towards Burgers and Fries / Blind Channel crags. The 60L68 and 60L70 run below the 2L09 overtop of several blind channel crags.

These transmission lines cover a wide variety of terrain from steep rocky bluffs with sparse trees, to flat or rolling hillsides with deep, rich soils and dense vegetation. If vegetation is left to grow unchecked, it could reach the conductors and spark a fire or injure a bystander.

Rather than regularly treating short vegetation, it is often left untreated until it nears the conductors, which permits vegetation to become quite tall. This practice is undesirable within the park as it causes unfavorable conditions at climbing areas. Shade from tall-growing vegetation makes crags slow to dry and encourages moss growth. Leaf litter and other detritus build up in cracks and on ledges, increasing efforts required to keep areas climbable. Infrequent treatments of tall-growing vegetation also cause consternation among park users due to the visual shock of such radical transitions from tall "forest," to a cleared landscape. Furthermore, this practice creates increased debris and fuel loading, which in turn requires more intensive management.

In order to reduce these negative impacts to park users, transmission line ROWs are to be maintained in a constant low-growing native shrub community, while allowing for scattered tall-growing trees to

persist (where possible). Regular and frequent vegetation management activities are to be completed in order to achieve this. Sites that currently support a high-density of hardwood coppices are to be converted to self-maintaining sites with few trees and a diverse variety of native shrub species of varying heights. Scattered trees are to be permitted to grow, and removed as needed when they approach the conductors. This strategy will provide habitat for wildlife, shade for hiking trails, sunlight for crags, and although will require a substantial initial effort, will eventually require minimal maintenance.

A mutually beneficial Smoke Bluffs Park Transmission Line ROW Vegetation Management Plan is to be developed in consultation with BC Hydro, District staff, and the Committee. This plan is intended to address the following items:

- Timeline, procedures, and responsibilities to achieve the desired state;
- Strategies to minimize disruption of recreational activities;
- Desirable / permissible methods of vegetation management;
- Strategies to limit the use of chemical herbicides;
- Procedures for fuel hazard / debris management – may be location-specific (i.e. high traffic areas vs. areas hidden from view of primary trails);
- Selection of appropriate replanting species (where needed);
- Strategy to minimize the visual impact of treatments within the park;
- Protocols for regular communication; and
- Provisions for District input and/ or monitoring of maintenance work.

## Climbing Routes

Rock climbing in the Smoke Bluffs area has been taking place for more than five decades, long preceding the formal creation of the municipal park. Individuals and volunteer groups have always carried out the work of developing and maintaining climbing routes. The District has never been involved in rock climbing route development oversight. This demarcation was acknowledged when the park was first established and is unchanged by the adoption of the Management Plan. It is analogous to the situation in the nearby provincial parks - Stawamus Chief, Shannon Falls and Murrin - where climbing route development takes place without park ranger involvement.

Specifically, the District recognizes that the development and maintenance of climbing routes require:

- **Installation of fixed equipment.** The majority of routes have bolted top anchors, utilizing holes drilled with cordless power tools. Routes may also have protection bolts at other locations, where natural removable protection is not possible; and
- **Vegetation management.** Most routes are brushed to remove lichen and moss before the first ascent, then may be brushed again at intervals. Trees too close to cliffs may need limbing, or complete removal. Wholly new cliffs may require base area clearance and new access trails.

In 2012 Squamish Council adopted the "[Best Practices Guide For Rock Climbing Route Development in the Squamish Area Provincial Parks](#)", as the appropriate guidance document for the Smoke Bluffs Park, as updated from time to time, produced by BC Parks and Squamish Access Society. The District expects any individual or volunteer group establishing or maintaining routes to be following that guidance.

Over time, there may be instances where observers, unfamiliar with rock climbing, may criticize activities associated with route development or maintenance as inappropriate or excessive. Any such criticism will be brought to the Advisory Committee for an opinion, before any action is taken. The District would expect any opinion to be framed in terms of the adequacy of compliance with the Best Practices guidelines.

Furthermore, the Advisory Committee, in conjunction with volunteer groups like Squamish Access Society, may at times instruct remedial action, for example, where Best Practices have not been followed for fixed anchors, or where old fixed equipment needs replacement. The District may provide funding for this kind of work. The work itself will be performed by insured professional rock climbing guides.

## **Events and Filming**

### **Filming Activities**

Filming activities within the Smoke Bluffs Park will occur in accordance with the following policies and guidelines:

- District of Squamish 'Filming Within Smoke Bluffs Park' Policy # A01B-02, approved by Council November 15, 2011;
- Instructions for Film Industry (November 2011);
- Instructions for Squamish District Communications Office (November 2011); and
- Instructions for Park Liaison (November 2011).

### **Special Events**

Commercial Events such as races which utilize the park should comply with the established guidelines drafted in relation to the film industry:

- Instructions for Film Industry (November 2011); and
- Instructions for Park Liaison (November 2011).

Applications for events within the District of Squamish located within or in close proximity to the Smoke Bluffs Park will be referred to the Park Liaison for review and commentary.

## **Additional User Groups**

For neighbourhood residents, community members and visitors to the area, the Smoke Bluffs Park is an easily accessible natural area with a trail system that is enjoyed for climbing, walking, running, biking, hiking and other recreational activities. The park's bluffs offer many excellent vantage points from which to view Howe Sound, and they present an interesting and undulating landscape for the casual walker and also for the "trials" rider.

As park infrastructure such as the trail system has developed and improved, non-climbing uses such as walking and trail running have increased. The intent of the Smoke Bluffs Park is to remain focused on rock climbing, a characteristic which makes it a unique park within the Lower Mainland and Sea to Sky area. Other uses within the park are supported; however, climbing should remain the main focus of the park. In some areas of the park, signage identifies use restrictions (ie. pedestrian vs. bike use).

### **Hikers, Trail Runners and Dog Walkers**

The Loop Trail network - outer loop, inner loop and view point trails - is one of the most popular short (~30 minute) hikes in the Squamish area, especially for families, seniors and trail runners. The Loop Trail is primarily a pedestrian-use trail. Hikers and dog walkers are encouraged to respect other trail users and stay on the established trails. The Smoke Bluffs Park is not an off-leash dog area; dog walkers are expected to have their dogs on leash at all times. Receptacles are provided at several park entrances to dispose of dog waste.

### **Equestrian**

The Smoke Bluffs Park Main trail is occasionally used for horseback riding.

### **Cycling**

Cycling within the Smoke Bluffs Park can generally be characterized as fitting into two categories: commuter cycling and mountain biking.

Commuter cycling occurs in the lower elevation areas of the park by way of the Main Trail connecting the lower Smoke Bluffs parking lot to Hospital Hill. This route provides through-transit of the park and a pleasant ride. Pedestrian and bicycle use is separated on the lower steeper section of the Main Trail. Commuter bicycle use is expected to increase as further development occurs and a linkage is established across the Blind Channel. As commuter bike volume increases on the Main Trail, ongoing review of multi-use compatibility will be completed. Measures such as trail design to further separate cyclists from other trail users and speed calming devices such as chicanes should be considered in collaboration with affected users.

Mountain biking activity within the Smoke Bluffs Park is primarily movement through the park to access trails beyond the park boundaries, generally to the east or north. Due to typically steep topography, relatively little mountain biking use is made of the upper park located above the Main Trail. Mountain



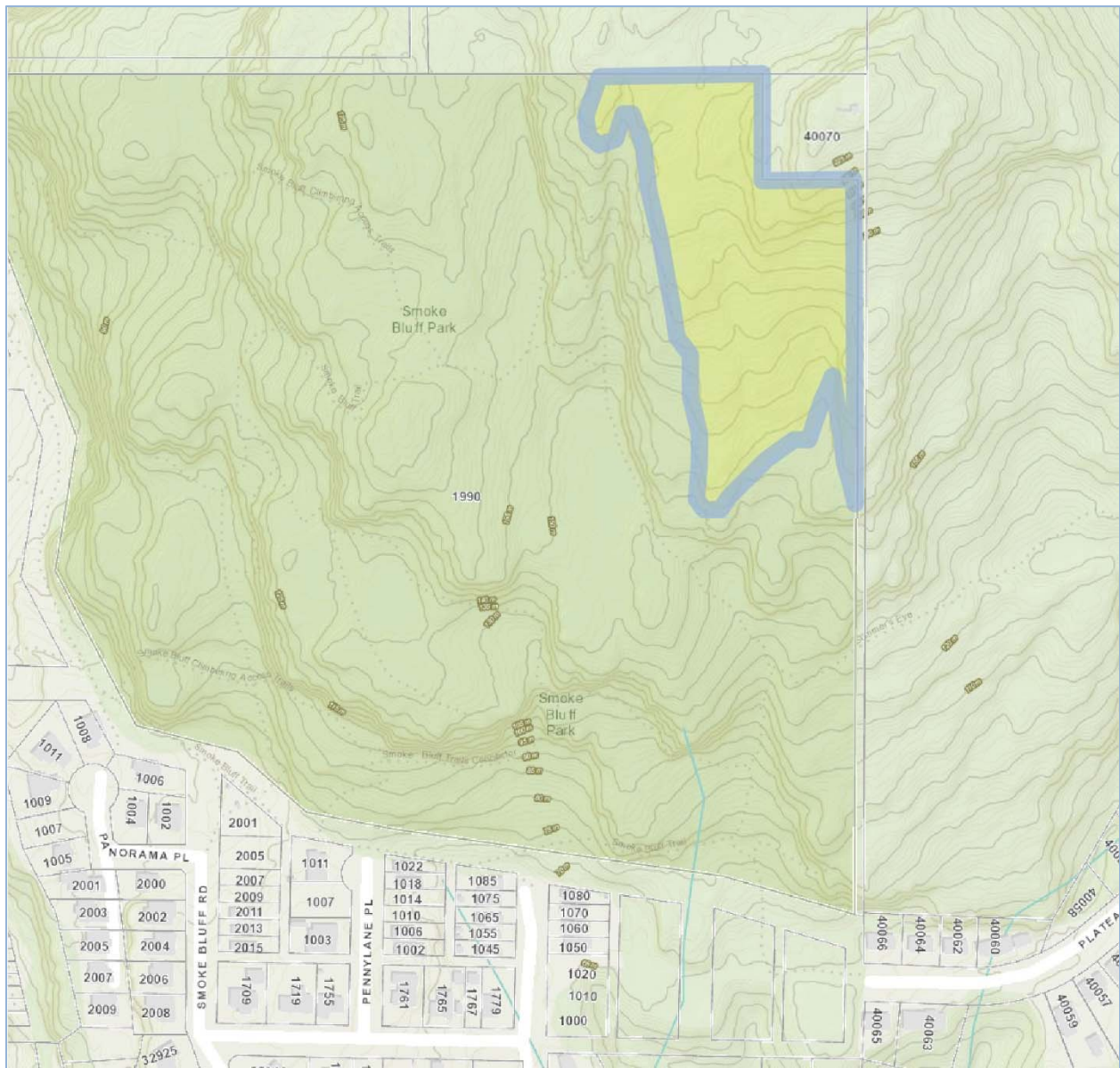
bike use is supported in the area generally identified in Figure 1 by the blue polygon (p. 18), which is also used by trials motorcycle riders.

There is support for the possible development of a dedicated mountain bike route through the upper park to connect to trails beyond the park boundaries. Should a future mountain bike connection through Smoke Bluffs Park be developed, consideration would include separating user groups where there are safety or sightline concerns, similar to the usage principles on the Main Trail.

### **Trials Riding**

Trials riding is the only motorized vehicle activity permitted within the Park. Trials bike riders have historically used limited parts of the park and they continue to use a few specific trails on the north-eastern part of the park. Trials riding is supported in the area generally identified in Figure 1 by the blue polygon (p. 18). The boundary of the polygon in Figure 1 is approximate and minor extension of trials bike use a short distance beyond the identified boundary may be appropriate if necessary to circumnavigate small landscape features.

The principles in allowing continued use of the park by trials riders is that conflicts with other trail users should be avoided where at all possible, and that trials routes should not cross the Main Loop Trail. Figure 1 will be adjusted as more accurate GPS information on trail locations is made available.



**Figure 1.** Smoke Bluffs Park Area Where Trials Motorcycle and Mountain Bike Use is Supported

## **Commercial and Educational Users**

A number of commercial and educational groups such as adventure tour groups, adventure racing groups, schools and camps use the park. Aside from District of Squamish business license for income generating activities, there is no established permitting process for use of the park. Development of a process for monitoring commercial and educational use of the park is supported, but is not contemplated at this time given District staff resource constraints.

### *Rock Climbing Guides*

There are a number of long-established guiding companies which operate in the bluffs. The presence of ACMG certified guides operating in the Park is a benefit to District of Squamish, as all guides have advanced (Level III) first aid certification. These guides provide role modeling for safe practices and have been known to intervene to avert dangerous situations involving beginner climbers in the park who may not be their clients. Any guide or guiding company operating in the Bluffs must operate under a business license from District of Squamish.

### *First Responders*

Over the years Search and Rescue, police agencies and the Canadian Forces have conducted training exercises in the Bluffs. These groups are not commercial entities.

### *Youth Summer Camps*

Extensive use is made of the park by summer camp groups. These groups will typically hire local guides to assist in their programs.

### *Outdoor Education*

Various institutions make regular use of the park for educational purposes. These groups will typically hire local guides to assist in their programs. Examples include the Prince of Wales TREK program, Capilano University, Thomson River University and the Association of Canadian Mountain Guides.

A number of American programs similar to those listed above visit the Smoke Bluffs on a recurring basis. Compliance with business licensing requirements by these groups is uncertain, as is the level of training and certification of guides and instructors in many cases. Examples include Bellingham Community Center day camps, YMCA Seattle and the National Outdoor Leadership School (NOLS).

## Appendix

### Capital Project Priorities

The following capital projects have been identified as priorities for the short, medium and long term development of the Smoke Bluffs Park.

**Table 1: Capital Project Priorities**

<b>Capital Project Priorities</b>	
<b>Short Term (1-3 years)</b>	
Expand main parking lot. (2017 - 2018)	High
Finalize an addition to the Loop Trail to extend to Smoke Bluff Summit (near the microwave tower), include new East-side Trail past Grand Doug Crag. If located on private or Crown land, get necessary approvals. (2017)	Moderate
Trail Improvement: High Cliff Trail within park. (2017)	Moderate
Trail improvements: Loop Trail to One Toque Trail. (2018)	Low
Trail improvements: Boulder Gully to One Toque link Trail. If located on private or Crown land, get necessary approvals. (2018)	Low
<b>Medium Term (4-6 years)</b>	
Resurface parking lot with appropriate surface.	Moderate
Install washrooms with flush toilets at main parking lot.	Low
<b>Long Term (6-20 years)</b>	
Acquire property along the Mamquam Blind Channel.	High
Create additional access along Blind Channel and re-open climbs in that area (e.g. The Zip), High Cliff Trail official connection.	Moderate
Acquire Crown Land property along North boundary of the Park up to the Crown lease boundary.	Low

## Management Project Priorities

The following management projects have been identified as priorities for the short, medium and long term development of the Smoke Bluffs Park.

**Table 2: Management Project Priorities**

<b>Management Project Priorities</b>	
<b>Short Term (1-3 years)</b>	
Clarify land issues on northern boundary and survey boundary. (2017)	High
Develop Vegetation Management Plan in cooperation with BC Hydro for vegetation management under power line rights of way.	High
Develop specific policy for race events that use the park.	High
Develop Debris Management Strategy.	High
Ongoing review of trail function and user compatibility related to commuter traffic along the main trail.	High
Develop a cycling policy to enhance safety and reduce conflict in the park.	High
Review performance of dry-compost toilet for consideration in main parking lot.	Moderate
Finalize FMCBC Land Transfer.	Moderate
<b>Medium Term (4-6 years)</b>	
Develop and define frontcountry and backcountry zones to guide appropriate level of development.	Low
<b>Long Term (6-20 years)</b>	
Work with adjacent land developers to create neighbourhood connectivity.	Moderate

## Maintenance Work Priorities

The following management projects have been identified as priorities for the short, medium and long term development of the Smoke Bluffs Park.

**Table 3: Maintenance Work Priorities**

<b>Maintenance Work Priorities</b>	
<b>Short Term (1-3 years)</b>	
Clean up Tunnel Rock area (2017)	High
Replace Kiosk map; update with revised trail and park boundary (after GPS of trails) (2017)	High
Install picnic tables (opposite Mosquito, near playpark, at Tunnel Rock) (2017-2018)	High
Install bench at viewpoint above Octopus Garden (2017-2018)	High
Improve trail at base of Penny Lane cliff (2018-2019)	High
Improve park entrance for safety (brush clearing to improve sight lines, subject to environmental review)	High
Install additional portable toilets in main parking lot	High
Debris management	High
Improve road signage at park entrance	High
Ongoing program of machine maintenance of trails – current priorities: Funorama, trail above playpark	High
Redesign of the entrance yellow gate and bicycle flows	Moderate